

last modified: 04/22/19 printed: 04/22/19 by bl H:\Projects\2014114200E Shawnee Site and Drainage Improvements\Drawings\14200E-ST.dwg

CLASS 1 TYPE 1 BIT PAVEMENT WEARING SURFACE, ON 8" OR 8" COURSE (PER MASS DOT SECTION #60)

COMPACTED BOND COURSE, DENSE BLEND OF CRUSHED STONE OR RECLAIMED PAVEMENT, BONDING CONFORMING TO MASS DOT STANDARDS SPECIFICATIONS FOR HIGHWAYS AND BRIDGES

APPROVED SUBGRADE

GENERAL NOTES:

- SUB-GRADE (EXISTING MATERIAL) SHALL CONSIST OF INERT MATERIAL THAT IS HARD, DURABLE STONE AND/OR COURSE SAND, FREE FROM LOAM. EXCAVATE SANDY-LOAM AND/OR LOAMY-SAND TOPSOIL MATERIAL FROM ALL PAVED AREAS PRIOR TO SUB-BASE INSTALLATION
- PLACE SUB-BASE IN MAXIMUM 3" LIFTS (COMPACTED TO 95%)
- COMPACT SUB-GRADE FILL TO 95% COMPACTION
- SEE SITE LAYOUT PLAN FOR PAVEMENT WIDTH AND LOCATION
- SEE GRADING PLANS FOR PAVEMENT SLOPE AND CROSS SLOPE
- SWEEP CLEAN THE EXISTING BRIDGE COURSE SURFACE PRIOR TO INSTALLING THE WEARING COURSE BY A STREET SWEEPING MACHINE
- APPLY A TACK COAT PER SPECIFICATIONS

BITUMINOUS PAVEMENT
NOT TO SCALE

HANDICAP PARKING SIGN AND VAN ACCESSIBLE SIGN WHEN REQUIRED

CURB, BERM OR CURB STOPS-SEE PLANS AND DETAILS

4" WIDE PAINTED LINES (TYP.)

20' TYP.

2% SLOPE MAX

5' MIN. SEE NOTE 1

9' TYP.

HANDICAPPED PARKING
NOT TO SCALE

NOTES:

- SIGN LAYOUT, COLORS, SYMBOL AND LETTERING SHALL BE AASHTO STANDARD
- TO BE LOCATED ON SITE AT ALL HANDICAP SPACES AS SHOWN ON PLAN
- METAL POST SHALL BE MANUFACTURER PAINTED WITH EXTERIOR BLACK ENAMEL OF APPROVED EQUAL
- STEEL PIPE TO BE USED WHERE SIGN IS INSTALLED IN PAVED AREA

12" x 18" HANDICAPPED RESERVED PARKING SIGN

"VAN ACCESSIBLE" SIGN AS REQUIRED

METAL POST 2" x 2" x 0.188" STEEL POST OR APPROVED EQUAL

CROWN

6" DIA. STEEL PIPE SEE NOTE (4)

FINISH GRADE

CLASS 10" CONCRETE

6"

12" DIA.

3'-0" MIN.

3'-0" MIN.

6'-0" MIN.

TYPICAL HANDICAP SIGN DETAIL
NOT TO SCALE

TOPSOIL - NO STONES GREATER THAN 1" Ø. COMPACT WITH A HANDROLLER IN TWO DIRECTIONS & FINE RAKE PRIOR TO SEEDING

SUBSOIL - COMPACTED AT 95% MAXIMUM DENSITY

SEED - AS SPECIFIED IN NOTES AND DRAWINGS. TOP DRESS W/ 4" HAY MULCH AFTER SEEDING.

NOTE: LOAM & SEED ALL DISTURBED AREA NOT CALLED OUT TO BE PLANTED OR PAVED

LOAM AND SEED
NOT TO SCALE

SEAL 10" DEEP HOLE W/ MORTAR

2-#3 REBARS

6" x 7-1/2" LONG

2-1/2" HOLES

6'-0"

SECTION

EDGE OF PAVEMENT

PARKING STALL

WHEEL STOP

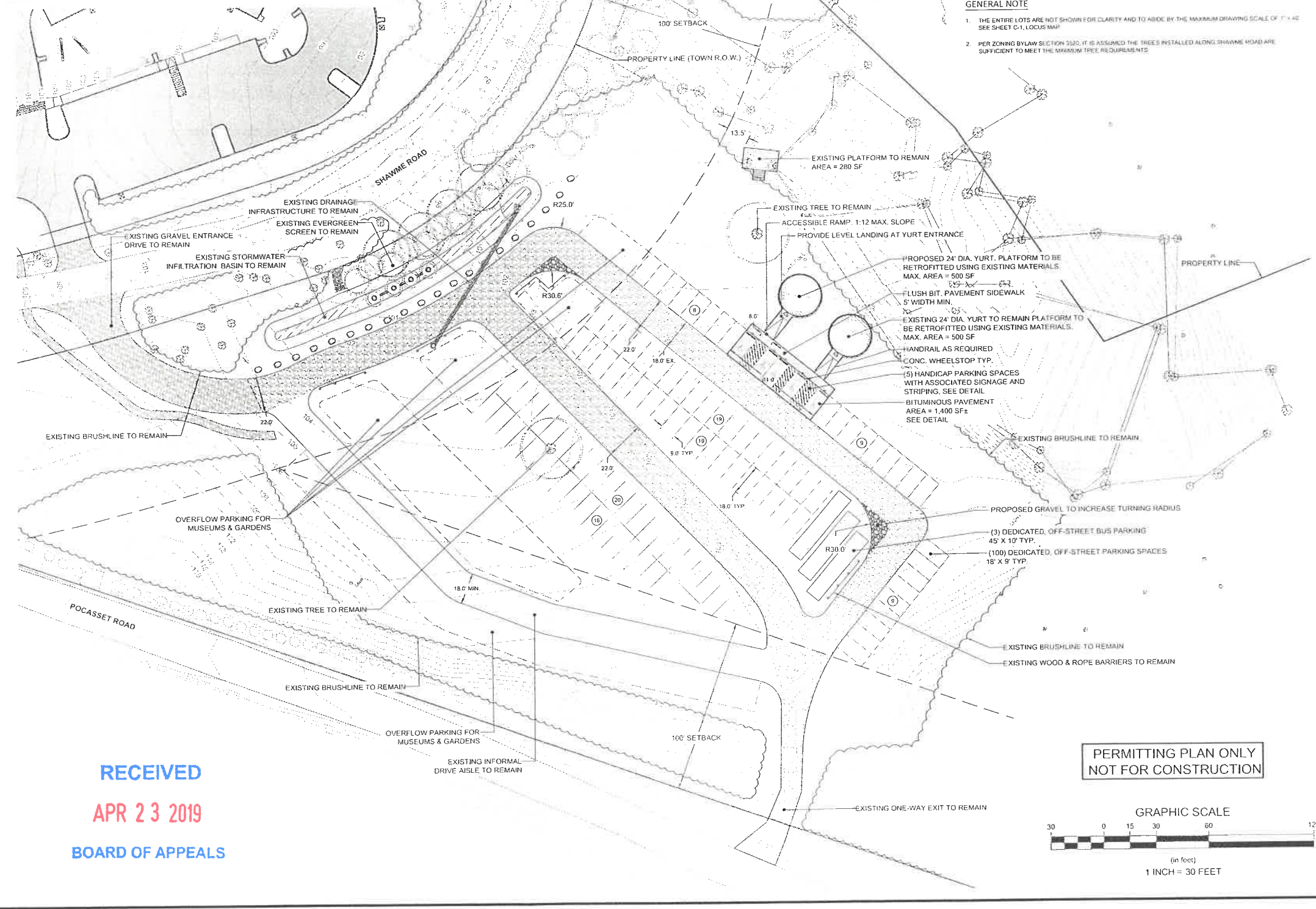
1-4" TO EDGE OF PARKING STALL

PAINTED STRIPES AS SHOWN IN THE SITE PLAN

INSTALLATION PLAN
PRECAST CONCRETE WHEELSTOP
NOT TO SCALE

LEGEND:

GENERAL	SYMBOLS
BUILDING	EXISTING TREE
EDGE OF PAVEMENT	EXISTING EVERGREEN TREE
WOOD & ROPE BARRIER	DRAIN MANHOLE
STONE	CATCHBASIN
STORMWATER AREA	FLARED END OUTLET
TREE LINE	STONE APRON
CROSSWALK/PAVEMENT STRIPING	ROCK
PROPERTY INFORMATION:	SIGN
PROPERTY, LOT, OR ROW SETBACK LINE	HANDICAP SYMBOL
UTILITIES	NUMBER OF PARKING SPACES
DRAIN PIPE	



SPECIAL PERMIT CRITERIA

- PROPERTY INFORMATION
ADDRESS: 0 POCASSET ROAD & 0 SHAWNEE ROAD
PARCEL IDS: 37-001 & 37-002
LOT AREAS: 10.55 ACRES & 24.82 ACRES
ZONING DISTRICT: R-1
- ALL PROPOSED STRUCTURES WILL BE SINGLE STORY, WITH A MAXIMUM HEIGHT OF 20 FEET, AND EACH STRUCTURE SHALL NOT EXCEED 500 SF.
- PROPOSED IMPERVIOUS LOT COVERAGE = 4,000 SF ± (0.87%) CALCULATION EXCLUDES GRAVEL DRIVES
- PROPOSED STRUCTURES AND OFF-STREET PARKING IS LOCATED OUTSIDE OF ALL 100' PROPERTY SETBACKS
- EVERGREEN PLANTINGS ARE PROVIDED ALONG SHAWNEE ROAD TO SCREEN THE PROPOSED OFF-STREET PARKING AND PROPOSED STRUCTURES FROM THE PUBLIC WAY.
- OVERFLOW PARKING FOR THE MUSEUMS AND GARDENS IS PROPOSED WITHIN THE 100' PROPERTY SETBACK AS SHOWN.

PROPOSED PARKING COUNTS

OFF-STREET SPACES	100
HANDICAP ACCESSIBLE SPACES	5
VAN ACCESSIBLE SPACES	4
TOTAL SPACES	109

OFF-STREET BUS SPACES: 3

GENERAL NOTE

- THE ENTIRE LOTS ARE NOT SHOWN FOR CLARITY AND TO ABIDE BY THE MAXIMUM DRAWING SCALE OF 1" = 40' SEE SHEET C-1, LOCUS MAP
- PER ZONING BY-LAW SECTION 2520, IT IS ASSUMED THE TREES INSTALLED ALONG SHAWNEE ROAD ARE SUFFICIENT TO MEET THE MINIMUM TREE REQUIREMENTS

PERMITTING PLAN ONLY
NOT FOR CONSTRUCTION

GRAPHIC SCALE

30 0 15 30 60 120
(in feet)
1 INCH = 30 FEET

RECEIVED
APR 23 2019
BOARD OF APPEALS

Revisions

No.	Description	Date	By	Appr.
1				
2				
3				
4				
5				
6				
7				

Horsley Witten Group, Inc.
Sustainable Environmental Solutions
www.horsleywitten.com
90 Route 69A, MA 02883
508-833-6600 voice
508-833-3150 fax

ZONING BOARD OF APPEALS
PERMITTING PLAN
0 POCASSET STREET & 0 SHAWNEE ROAD
SITE LAYOUT PLAN

Plan Title: SITE LAYOUT PLAN

Prepared For: **Heritage Museums and Gardens**
87 Grove Street
Sandwich, MA 02583
Phone: (508) 888-3300
Fax: -----

Prepared By: **Holmes and McGrath, Inc.**
205 Worcester Court, Suite 4A
Falmouth, MA 02540
Phone: (508) 546-3304
Fax: (508) 546-0872
Date: AUGUST 2016

JUSTIN J. LAMOREUX
CIVIL
No. 4737
Professional Seal

Project Number: 14200E
Sheet: 2 of 2
Sheet Number: C-2