

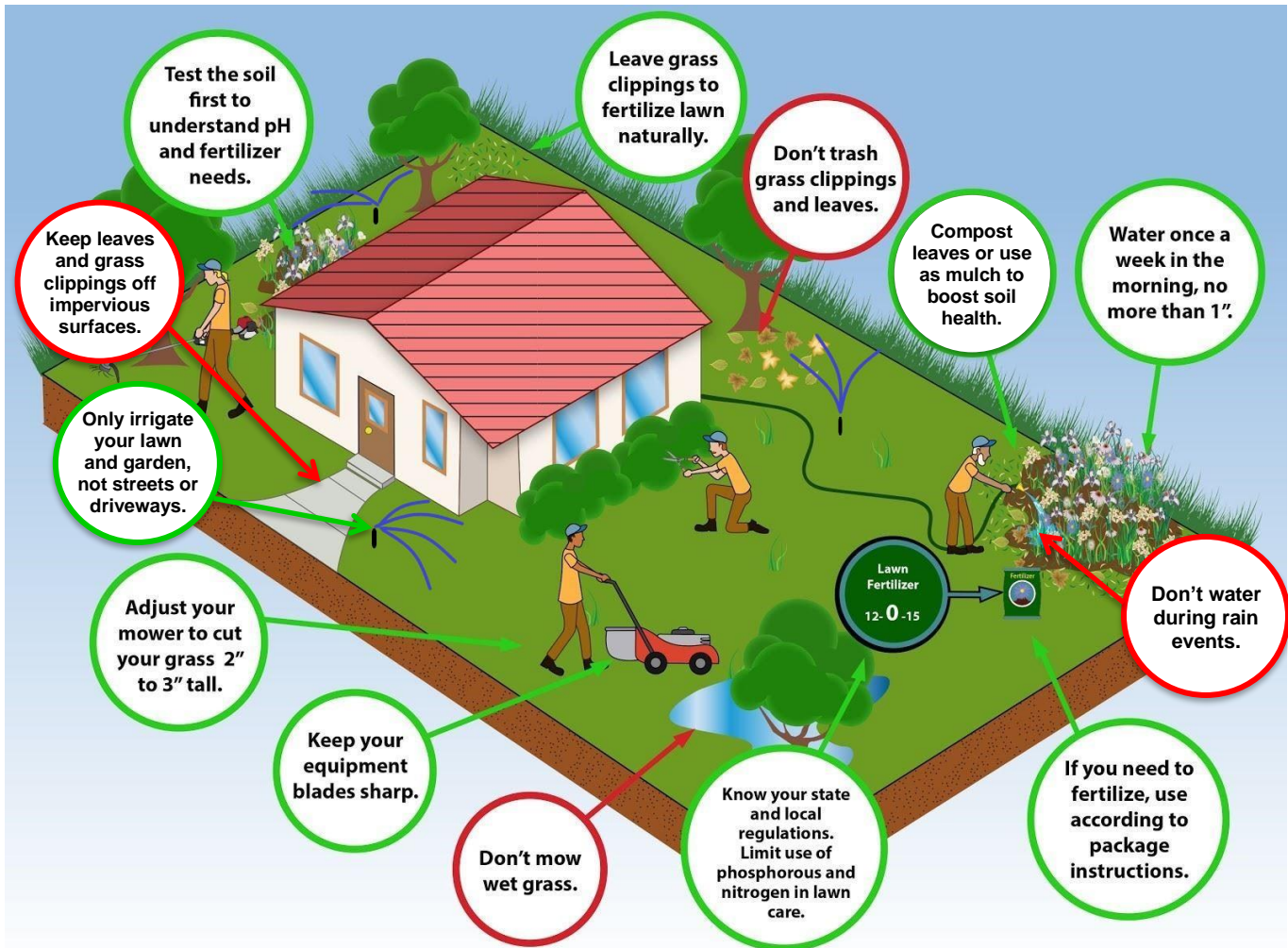


Town of Sandwich

THE OLDEST TOWN ON CAPE COD



Yard Care Tips to Help Curb Stormwater Pollution



Help keep our waterways clean by properly using slow-release and phosphorous-free fertilizers:

- Only apply fertilizer with phosphorus during the first growing season for a newly established lawn, or if a soil test shows that phosphorus is needed for an established lawn. Contact the UMass Cooperative Extension Soil Nutrient Testing Laboratory to learn how to conduct a routine soil test:
<https://aq.umass.edu/services/soil-plant-nutrient-testing-laboratory/ordering-information-forms>

Help reduce nitrogen and phosphorous buildup, which promotes harmful algal blooms and excess aquatic weed growth by properly disposing of lawn trimmings and leaf litter:

- Remove leaves and grass clippings from driveways, streets, parking lots, and gutters.
- Do not dispose of leaves or grass clippings in or near wetlands, waterways, or drainage areas. Instead:
 - Add bagged leaves to your compost pile for use in your garden and landscaping next season.
 - Mulch leaves into your lawn to add nutrients and to save time on bagging.

Do your part to keep Massachusetts' waterways clean.
Find more tips like these at www.thinkbluemassachusetts.org

